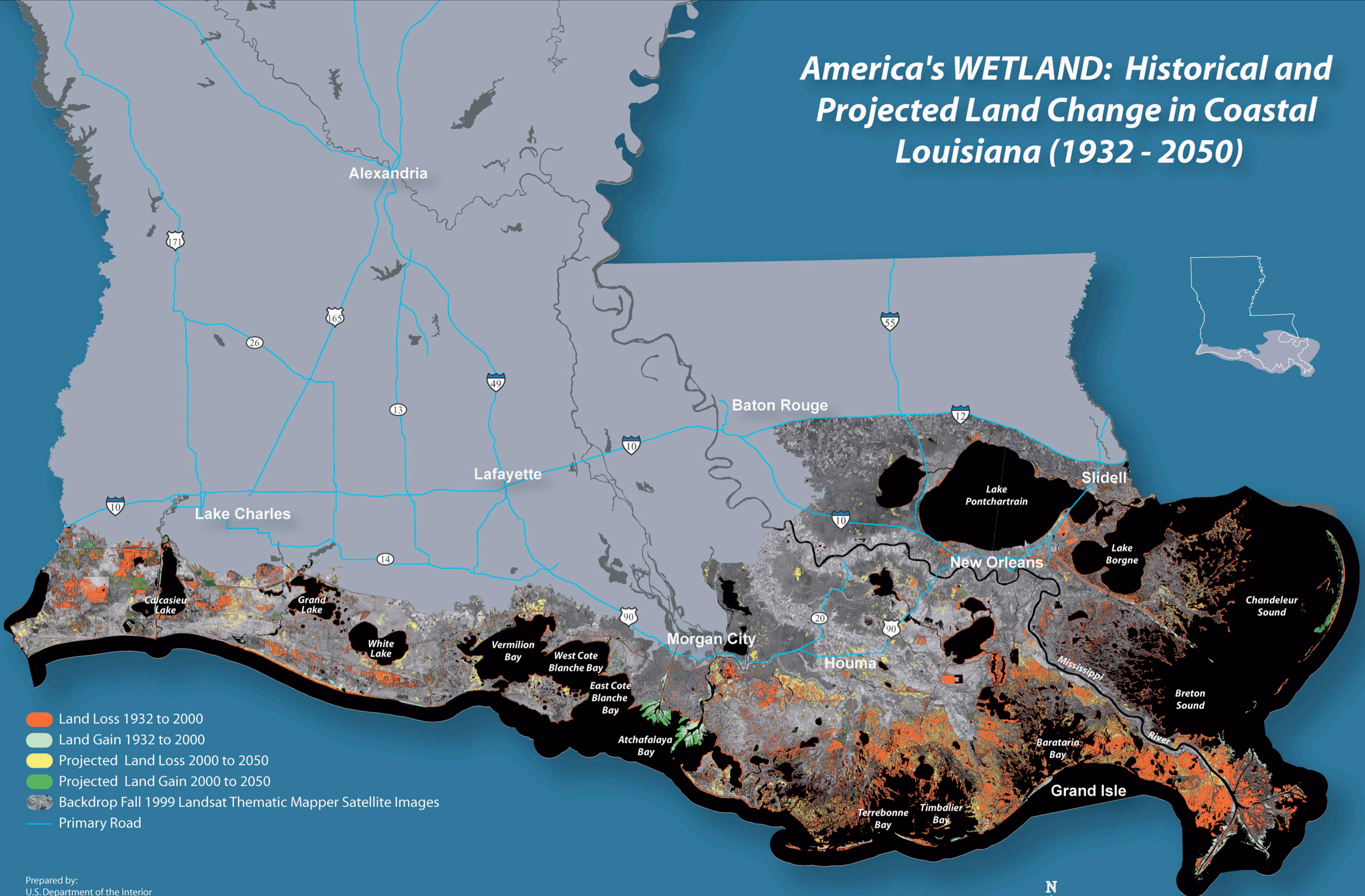


America's WETLAND: Historical and Projected Land Change in Coastal Louisiana (1932 - 2050)



- Land Loss 1932 to 2000
- Land Gain 1932 to 2000
- Projected Land Loss 2000 to 2050
- Projected Land Gain 2000 to 2050
- Backdrop Fall 1999 Landsat Thematic Mapper Satellite Images
- Primary Road

Prepared by:
 U.S. Department of the Interior
 U.S. Geological Survey
 National Wetlands Research Center
 Coastal Restoration Field Station
 Baton Rouge, Louisiana
 and
 Louisiana Department of Natural Resources
 Coastal Restoration Division
 Baton Rouge, Louisiana

Map Date: April 23, 2004

